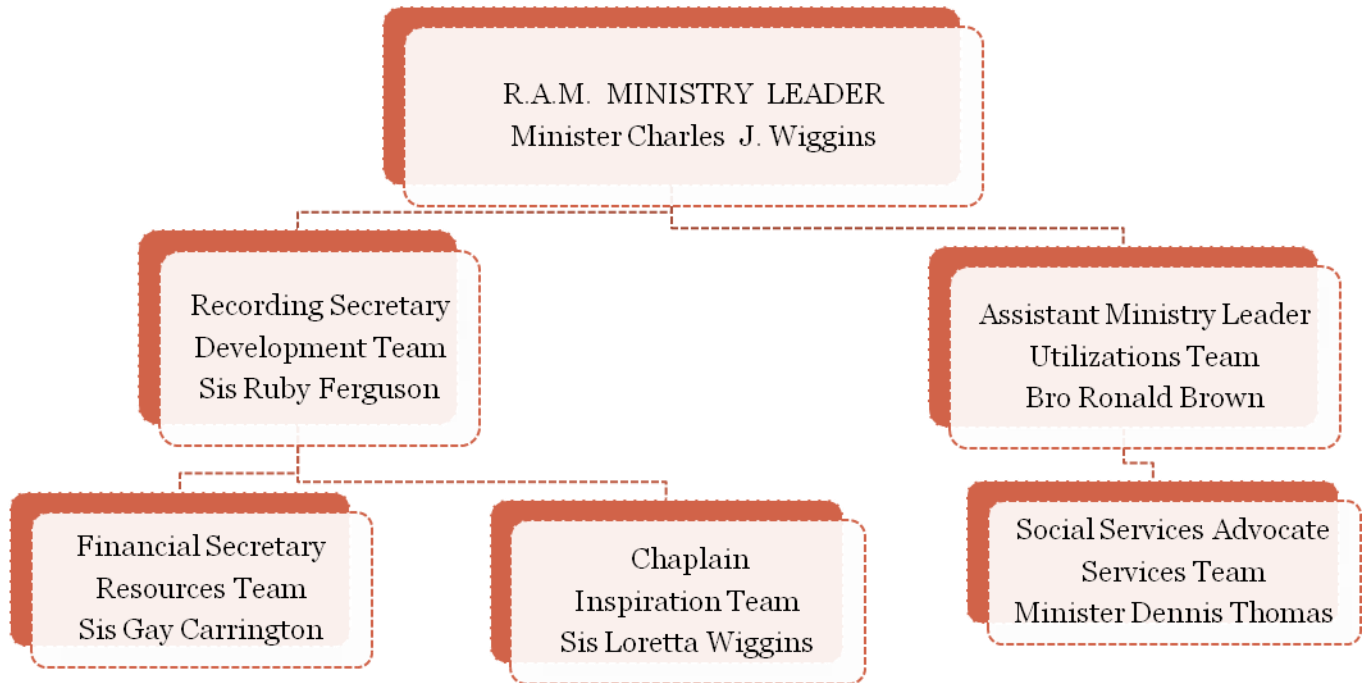


RICEVILLE ADULT MINISTRY ORGANIZATIONAL STRUCTURE

Rev. Terry E. Mackey, Sr Pastor

Rev. Joe D. Johnson, Pastor Emeritus



POSITIONS AND AREAS OF RESPONSIBILITIES:

1. Ministry Leader

The Ministry Leader shall be appointed by the pastor. He or She shall exercise authority over and assume responsible for the orderly management of all adult ministry boards, committees, staff, activities, events, meetings and initiatives. The ministry leader shall also be accountable to the pastor and officers of the Riceville Mt Olive Baptist Church for the overall financial, spiritual and corporeal operations of the ministry.

2. Assistant Ministry Leader

The Assistant Ministry Leader shall be appointed by the ministry leader. The Assistant Ministry Leader shall lend support to the ministry as requested by the ministry leader or the Riceville Adult Ministry (R.A.M.) Committee. Additionally, the assistant ministry leader shall also serve as team leader of the Utilizations Team. The Utilizations Team serves as the corporeal resource facilitators in all activities, events and initiatives such as group fellowships, hospitality, field trips and special events.

Utilizations Team Members: Bro. Ronald Brown Minister Donald R. Mahoney

RICEVILLE ADULT MINISTRY ORGANIZATIONAL STRUCTURE

3. Recording Secretary

Appointed by the ministry leader, the Recording Secretary shall record and keep an orderly registry of all recorded minutes. Additional responsibilities include continuance of a current roster of adults and serve as team leader of the Development Team. The Development Team shall facilitate training, mentorship, in reach/outreach, health and fitness.

Development Team Members: Sis Ruby Ferguson Sis Norma Davis Sis Pricilla Harris

4. Financial Secretary

Appointed by the ministry leader, the Financial Secretary shall lend direct and supplemental service and support to the ministry leader. The financial secretary shall keep an orderly record of budgets, assets, operating expenses and funds donated to R.A.M. Additional responsibilities include serving as team leader of the Resources Team and serving as advocate for the Christmas Committee during R.A.M. Committee meetings.

Resources Team Members: Sis Gay Carrington Sis Sheila Wilson

5. Chaplain

Appointed by the ministry leader, the Chaplain shall be responsible for opening and closing devotions during meetings, activities and events. The minister leader and chaplain shall share responsibilities of leadership in areas of intercessory prayer, ecclesiastical enthusiasm, bible study and visitations. He or she shall serve as team leader of the Inspiration Team.

Inspiration Team Members: Sis Loretta Wiggins Minister Charles Wiggins

6. Social Services Advocate

Appointed by the ministry leader, the Social Services Advocate shall be responsible for coordinating continued support of the food and clothing pantry ministry, benevolence ministry and coordinating minor home upkeep and repairs for senior adults. He or she will also assist in areas that support the improved quality of life for adults in our church and community. He or she shall serve on the Social Services Team as team leader. Social Services Team Members:

Minister Dennis Thomas Sis Gloria Johnson Minister Leo Verret Jr.

7. The Riceville Adult Ministry (R.A.M.) Executive Board

The Executive Board shall serve as an advisory board of The Riceville Adult Ministry (R.A.M.). The executive board, of R.A.M. shall be composed of the ministry leader and the following team leaders: Utilizations, Development, Resources, Inspiration and Social Services.

8. The Riceville Adult Ministry (R.A.M.) Committee

The R.A.M. Committee's responsibilities shall include but or are not limited to creating and implementing adult centric ideas and policies, events and endeavors, designed to enrich the quality of life of adult ministry participants. We shall diligently teach and follow the commandments of our savior, Jesus Christ and conformity to the administration of this church.